

# NJAC COUNTY BIZ

An Educational and Informative Newsletter for Counties and Businesses

New Jersey Association of Counties

ISSUE 71 - MARCH 2017

## Timing and Process Key in Development Projects

by Marjorie 'MK' Kaplan, Senior Account Executive for Axiom Communications



**Lloyd Rosenberg, AIA**  
President & CEO  
DMR Associates

Delays in construction projects can be costly — but perhaps the most expensive delays are the ones that occur before construction even begins. Materials and labor costs continue to rise in the economic expansion, and the cost of projects can increase from 10-20% from the time they are approved to the time construction begins.

“The political environment can be very cumbersome, and months or even years can pass between the time a project is originally conceived and budgeted until it actually breaks ground,” says Lloyd Rosenberg, AIA, President and CEO of DMR Architects. “We’ve worked with some townships on building plans as recently as two years ago that are now not in the budget anymore because they waited.”

DMR, which is currently working on more than 12 municipal building projects across New Jersey, recommends that municipalities calendar a re-budgeting process every three months so that delays can be priced into the final budget; and that bidding for jobs should take place as soon as after approval. “Typically a consultant has been retained to assist in the bidding for the project during its design phase who can be tasked with regular estimate updates. All the costs associated with the project need to be affirmed at regular intervals if there are hang-ups in getting started.”

Another important discipline is foresight into what happens with the project in the next generation. For example, if the municipality needs to house 50 office employees now, what happens if the number is 70 in 10 years? Or 30? With growth in government balanced by automation of some functions, requirements of today surely will evolve with time, and a conscious approach to how property assets can be repurposed will save challenges for the next generation.

And finally, the project managers on the municipal side need to be satisfied that they understand all the

*continued on page 3*

### **INSIDE THIS EDITION:**

- Pg. 1** Timing & Process Key in Projects
- Pg. 2** Get to Know Your County Official
- Pg. 4** 2017 NJAC Annual Conference
- Pg. 5** Drone Search and Rescue Operations
- Pg. 6** Maximize Your Investment
- Pg. 7** Providing Free Trees to Customers
- Pg. 8** Humanitarian Award to UC Freeholder
- Pg. 9** The Year of Retention
- Pg. 10** Transportation Management Software
- Pg. 11** Grey Gardens in Bloom
- Pg. 13** Welcome To Our New Member
- Pg. 14** Smart Communities Technology
- Pg. 15** Signal Performance Metrics
- Pg. 17** Federal Grants
- Pg. 18** Nationwide Economics
- Pg. 19** Therapeutic Value of Pets
- Pg. 22** NACo Annual Conference
- Pg. 23** NACo Webinars
- Pg. 24** County Partnership Health Center
- Pg. 25** Igniting A Dream
- Pg. 27** From the Executive Director
- Pg. 28** What’s Happening in Your County

## Get to know your County Official.....

### How many years have you served as Mercer County Freeholder?

I am currently in my 3<sup>rd</sup> term as a Freeholder having been elected in November 2008.

### What was the first public position you held?

My first public position was as a member of the Hamilton Township Zoning Board of Adjustment. My first elected position is as a Member of the Board of Chosen Freeholders.

### Why did you choose to run for Mercer County Freeholder?

I have always believed that public service is something that is a worthy cause. I saw an opportunity to give back to my community that had provided so many positive experiences as a child. I come from a political family so from a young age I knew that I wanted to serve my community as an elected official. I am hopeful that during my tenure as an elected official that I am able to make a positive impact on the lives of my constituents and most importantly the lives of the generations of those that are coming up behind me.



**John A. Cimino**  
Mercer County Freeholder

### What has been the most difficult decision you have had to make while serving as County Freeholder?

Some of the most difficult decisions deal with the constant budget constraints that all levels of government are facing. Here in Mercer, we have made several decisions to share services with neighboring counties that have led to laying off employees. It is never easy to cast a vote where it will lead to someone becoming unemployed. These individuals have families and loved ones that they care and provide for.

### What would our readers be most surprised to learn about you?

I think readers would be surprised to know that I am an avid New York Yankees fan that loves a good glass of Cabernet. I love my family and wish time didn't move too fast so we could spend more time together because life moves so quickly.

### Who is your role model?

My role models are my parents. They have done so much to provide opportunity for my family and I. I look up to them for different reasons. My mom because of her ability to never give up and always have a positive outlook. My dad because of his integrity and work ethic. I am a product of, and I hope that I am half of the person that each of them is as I grow older.

### What do you love about Mercer County?

I love Mercer County because of all of the wonderful things it has to offer. Our parks are some of the best in the State of New Jersey. We have been able to secure thousands of acres of open space for our residents to enjoy. The diverse economy provides opportunities for our people in all walks of life. Mercer County has international recognition because of our higher education facilities. Our youth sports programming provides great opportunity for our young residents to enjoy themselves and learn about life. It is a wonderful place to raise a family and I don't know of any place that I would rather be to do that!



## Timing and Process Key in Development Projects *(continued)*

elements of the project and their ramifications before it commences and specifically articulate all of their expectations. "Too often, both sides take it for granted that everything is understood by a review of the drawings. But the business issues are much deeper than the plans, and without a detailed examination of the architect's buildings plans against the client's plan for the building, disaster can strike in the form of surprises when the building is complete and it's too late for alterations.

Challenge your architect to explain how the plans relate to regulatory and other requirements conditions, which will help reveal potential complications in timing, and budget impacts."

With so many elements going into the making of a new building, recognizing that there will be surprises during the construction phase that even your architect or contractor didn't imagine, and accounting for that ahead of time can save municipalities both time and money. DMR, acting as the project manager for projects including the currently-in-construction Hudson County High Tech High School in Secaucus, is using technologies that allow all contractors on the project to talk daily in real time about potential issues and practical solutions, keeping them on a tight budget and aggressive timeline.

"There are risk-management processes that can deliver highly predictable and desirable project outcomes, but often timeframes and budget issues push even the most disciplined professionals off best practices," says Mr. Rosenberg. "At every turn, people need to remind themselves to measure twice and cut once. Mistakes mean doing things over, and that is far more expensive than doing them right the first time."

To learn more about DMR Architects please contact Lloyd A. Rosenberg, AIA, President & CEO, at (201) 288-2600 or via e-mail at [Lloyd@dmrarchitects.com](mailto:Lloyd@dmrarchitects.com).

### **About DMR Architects**

Headquartered in Hasbrouck Heights, N.J., DMR Architects is a respected full-service architectural firm specializing in architecture, master planning, sustainable design, programming, interior design and construction administration. The firm is active throughout local, national and international markets. Founded in 1991, DMR celebrates its 25<sup>th</sup> year serving a diverse client base in all market sectors, including public, corporate, education/higher education, residential and healthcare. DMR's experience includes capital improvement projects, renovations, additions and new construction. For more information, please visit [www.dmrarchitects.com](http://www.dmrarchitects.com).

*\*The Turner Building Cost Index is determined by the following factors considered on a nationwide basis: labor rates and productivity, materials prices and the competitive condition of the marketplace. For more information go to [www.turnerconstruction.com/cost-index](http://www.turnerconstruction.com/cost-index).*



## **BECOME A MEMBER *of the* NEW JERSEY ASSOCIATION OF COUNTIES**

Learn about the benefits of being a part of NJAC  
and how you can join by contacting  
Loren Wizman, Business Development Director  
at  
(609) 394-3467 or [loren@njac.org](mailto:loren@njac.org).

[Click here for an application.](#)

# 2017 CELEBRATION OF COUNTY GOVERNMENT

## SCHEDULE OF EVENTS

### MAY 10<sup>th</sup> - 12<sup>th</sup> AT CAESAR'S IN ATLANTIC CITY

**WEDNESDAY, MAY 10<sup>th</sup>**

Exhibitor Setup	9:00 a.m. - 3:00 p.m.
Registration Desk Hours	1:00 p.m. - 6:30 p.m.
Meet & Greet Reception with DJ Entertainment	5:00 p.m. - 7:00 p.m.

**THURSDAY, MAY 11<sup>th</sup>**

Registration Desk & Exhibit Hall Hours <i>(Continental Breakfast begins at 8:00 a.m.)</i>	8:00 a.m. - 3:00 p.m. & 4:30 p.m. - 6:30 p.m.
Board of Directors Meeting	9:00 a.m. - 10:00 a.m.
Staggered Seminars	10:15 a.m. - 12:30 p.m. 2:15 p.m. - 4:30 p.m.
President's Awards Luncheon & Reporters' Roundtable	12:30 p.m. - 2:00 p.m.
County Colleges Acappella Sing-Off	5:00 p.m. - 7:00 p.m.

**FRIDAY, MAY 12<sup>th</sup>**

Registration Desk & Exhibit Hall Hours <i>(Continental Breakfast begins at 8:00 a.m.)</i>	8:00 a.m. - 3:00 p.m.
	<i>*Vendors cannot begin to breakdown until 2:30 p.m.</i>
Staggered Seminars	8:30 a.m. - 10:45 a.m.
NJAC Presents the 2017 Gubernatorial Candidates	11:00 a.m. - 12:00 p.m.
County Schools Cook-Off	12:15 p.m. - 1:00 p.m.
Cook-Off Awards Ceremony	1:00 p.m. - 2:00 p.m.



More details & registration can be found at [www.njac.org](http://www.njac.org)

## Somerset County Sheriff's Office Purchase Drone For Future Search And Rescue Operations



*l to r: Lt. Mark Szczecina, Sheriff Frank Provenzano*

Sheriff Frank J. Provenzano, in collaboration with the Project Lifesaver team and Lockheed Martin, is proud to announce the purchase of the Project Lifesaver International Indago Unmanned Ariel Vehicle System (Drone) for the Somerset County Sheriff's Office. The purchase was funded from the Sheriff's Drug Enforcement Association (DEA) forfeiture account consisting of Federal monies seized from cooperative investigations with members of the Sheriff's Office. The PLI Indago UAV System is a military grade Quad rotor UAV designed specifically for the search and rescue of Special Needs populations with cognitive disorders who are prone to the life threatening behavior of wandering, included those with Alzheimer's disease, dementia, Autism and Down syndrome.

"Somerset County, NJ Sheriff's Office is the first public safety agency in the country to adopt the PLI Indago UAV System," said Gene Saunders, CEO/Founder of Project Lifesaver International. Saunders continued by saying "This type of innovated thinking and planning shows the Somerset County Sheriff's Office commitment to the special needs community and their dedication to protecting all in Somerset County,"

The PLI Indago UAV System will aid the Somerset County Sheriff's Office in locating Special-Needs populations with cognitive issues that go missing by substantially expanding search coverage while significantly decreasing search and rescue times. The PLI Indago UAV System will also serve as an airborne asset and greatly improve the probability of a successful recovery across broad search areas.

"This is a win-win for the Sheriff's Office and the residents of Somerset County for our agency to be able to assist the Special Needs community with a tool of this significance" stated Sheriff Provenzano. "The UAV System has greatly impacted search and rescue efforts in other parts of the country. We fully anticipate having the same positive results in our County during times of crises when families need our services the most."

Project Lifesaver is a program coordinated through the Somerset County Office on Aging and Disability Services, (OOA&DS) and is supported by the County Board of Chosen Freeholders. Families with loved ones at-risk of wandering due to cognitive and learning disabilities contact the OOA&DS for an assessment. This assessment determines program eligibility, assists families in understanding their loved one's condition and provides information on programs and services for which they may be eligible. Upon acceptance into the program, clients wear a personalized bracelet that emits a signal which aids the Sheriff's Office in locating the individual in an expeditious manner, should the need for a search and rescue be necessary.

"Project LifeSaver provides extra support to caregivers and families in order to keep their loved one in the community." said Joanne Fetzko, Executive Director of the County Office on Aging and Disability Services. "The hope is that the use of the UAV system will instill greater confidence in families; as it will improve the team's ability to help save lives and fulfill the program's mission in *bringing loved ones home safely*. Not only will the use of this equipment reduce search time and increase public safety but it will do so without risking the safety of the rescue team and first-responders; which is undeniably an invaluable benefit to the community. Hats-off to the Sherriff's Office for its vision and ability to increase safety."



# Maximize Your Investment in School Safety and Emergency Technology

by Lisa Valladares, Marketing Manager for Eastern DataComm

*An educational event to discuss solutions to one of the most important topics facing school districts, law enforcement and municipalities today-safety!*

Choose from 4 dates and locations - *seating is limited at each event*, so please register today!

## Monday, March 20, 2017

Seminar at Delaware Valley Regional High School - Frenchtown, NJ  
Introduction by Matt Cirigliano, IT Manager

## Thursday, March 23, 2017

Princeton Marriott at Forrestal Village - Princeton, NJ

## Thursday, March 30, 2017

Maggiano's - Bridgewater, NJ

## Tuesday, April 18, 2017

Seminar at St. Joseph's School for the Blind - Jersey City, NJ  
Introduction by Vincent Romano, Facilities Manager

At each of our events, learn:

- How you can **utilize your existing technology components** (ex: phone system, paging system speakers, etc.) to support your safety initiatives.
- How school districts such as Delaware Valley Regional High School, Northern Valley, Midland Park, St. Joseph's School for the Blind and Tenafly **improved day-to-day communications and school safety**.
- The importance of the 20-second emergency incident response time
- What **3 important principles** all schools and municipalities must follow when purchasing technology for lockdowns and emergency events
- **Avoiding common wasteful investments in technology** that do little to improve overall safety and security.
- **Lockdown Emergency Notification System** to easily put your school or building in Lockdown, Shelter-in-Place, or Evacuation automatically through the touch of a button.

Technology components should include bells, wireless clocks, paging, intercom and phone systems, wireless speakers, strobes/beacons and LED signage.

By truly understanding how each of these components work together, you'll be able to maximize your investments and ultimately improve the safety of your school district or municipality.



# Atlantic City Electric Providing 1,150 Free Trees to Customers

by Frank Tedesco, Senior Communication Specialist for Atlantic City Electric

## *Sixth Year of Partnership with the Arbor Day Foundation*

Atlantic City Electric (ACE) is providing 1,150 free trees to its residential customers through the Energy-Saving Trees program, which helps customers conserve energy and reduce household energy bills through strategic tree planting. Starting today, customers can reserve one free tree per household by visiting [www.arborday.org/ace](http://www.arborday.org/ace) or by calling 1-855-670-2773. Customers should have their ACE account number handy when ordering the free tree.

The one-gallon, four-foot potted tree will be delivered directly to customers while supplies last. Available tree species include American beech, baldcypress, river birch and white dogwood.



Vince Maione  
Region President  
Atlantic City Electric

“We are pleased to once again support the Energy-Saving Trees program which benefits the environment and helps beautify the communities we serve,” said Vince Maione, Atlantic City Electric region president. “This program can also help our customers save money on their air-conditioning expenses since trees provide shade for the home in the summer months.”

Shade trees can reduce residential cooling costs by as much as 20 percent, while in the winter months trees reduce wind speeds and infiltration of cold air into homes, thereby reducing heating costs. The Arbor Day Foundation calculates that the 1,150 trees are estimated to produce nearly \$250,000 in energy savings within 20 years.

The Energy-Saving Trees online tool assists Atlantic City Electric customers in finding the most strategic location for planting and estimates the annual savings. Customers using the on-line tool can call the Arbor Day Foundation for technical help at 1-855-670-2773.

The online tool was created by the Arbor Day Foundation and the Davey Institute, a division of the Davey Tree Expert Co., and uses peer-reviewed scientific research from the USDA Forest Service’s i-Tree Software to calculate estimated benefits.



White Magnolia Tree

Atlantic City Electric reminds customers to call 811 to have utility-owned underground lines marked before digging. One free call to 811 connects you to New Jersey One Call, which notifies the appropriate utility companies of your intent to dig. Every digging project, no matter how large or small, warrants a call to 811.

For more information about Atlantic City Electric, visit [www.atlanticcityelectric.com](http://www.atlanticcityelectric.com). Follow us on Facebook at [www.facebook.com/atlanticcityelectric](http://www.facebook.com/atlanticcityelectric) and on Twitter at [www.twitter.com/aceleconnect](http://www.twitter.com/aceleconnect). Our mobile app is available at [www.atlanticcityelectric.com/mobileapp](http://www.atlanticcityelectric.com/mobileapp).



# Freeholder Receives the Chester Holmes Humanitarian Award

On Monday, February 27<sup>th</sup>, the Union County Board of Chosen Freeholders honored Freeholder Vernell Wright with the Chester Holmes Humanitarian Award during its Celebration of Black History Month at the Union County Performing Arts Center located in Rahway. The Board of Chosen Freeholders created this award in honor of the late Freeholder Chester Holmes. Freeholder Wright has lived and participated in her community for over 50 years. She was joined on stage by her family members and those of the late Freeholder Holmes as well as Freeholder Vice Chairman Sergio Grenados, Freeholder Linda Carter, Freeholder Bette Jane Kowalski, and Freeholder Alexander Mirabella.



Photo by Jim Lowney /County of Union

**NJ** DIGITAL GOVERNMENT SUMMIT

MAY 23-24, 2017  
TRENTON



government technology

[Register Now](#)  
FREE EVENT

Wyndham Garden Trenton, 1 W. Lafayette St., Trenton, NJ



## The Year of Retention

by Jennifer Dowd, Marketing Manager for Kronos Public Sector

Retention seems to be a popular word this year. HR leaders across all levels of government are in a state of worry. Attract and retain... Attract and retain... This is the mantra by which public sector employers are living and breathing. So, what's all the fuss about?

As more employees are reaching retirement age, they know a plethora of knowledge will be walking out the door with each employee. So, governments are deep in succession planning and strategizing to address this. But it's also made many acutely aware that they need to figure out ways to retain this new generation of employees who are filling in these gaps. With pensions in the condition they are and pay often lower than the private sector, what's the draw to make them want to stay?

Regardless of the generation, people still believe in making a difference. Whether it's for their community or to make a difference in people's lives, public service tends to draw people in. But it doesn't necessarily make them want to stay. Employees want to be recognized for a job well done and offered opportunities to advance their careers. They want to be part of decision making and know their voice is being heard.

According to an article written by Neil Reichenburg of IPMA-HR, [Getting the Right People](#), employee engagement matters. *"Engaged employees are five times more likely to be very satisfied, five times more likely to recommend their place of employment to others, and four times less likely to leave."*

Engagement is not a one-size fits all; we are all individuals. What motivates one person, might not motivate the next. As managers and leaders address the reality of what retention means to their organization, they will discover there are multiple paths to create an environment employees can thrive in. And maybe, the employees who came into the public sector for the right reasons will want to stay a little while longer.

To learn more about Kronos, please contact Wesley Witherington, Kronos Sales Executive State of New Jersey, Public Sector and Education, at [wesley.witherington@kronos.com](mailto:wesley.witherington@kronos.com) or via telephone at (973) 331-5465.



---

## Kapsch Selected to Design, Build & Support the Port Authority of New York and New Jersey's Next Generation Agency-Wide Transportation Management Software

by Nicole Busse, Manager of Marketing & Communications for Kapsch TrafficCom

The Port Authority of New York & New Jersey (PANYNJ) has awarded Kapsch TrafficCom a four-year, \$8.8M contract to install an Agency-Wide Transportation Management Software (ATMS). The contract consists of a four-year base term followed by two additional one-year optional support periods. Powered by Kapsch's DYNAC® software, the new system will enable the Authority to manage ITS assets at its bridges, tunnels, aviation and port facilities, and the PATH rail transit system from any of its individual facility Operations Control Centers and the PA-AOC. The new ATMS will help the Authority improve operational efficiency, agency-wide visibility of travel conditions, and enhance regional transportation coordination.

*continued on page 10*

## Agency-Wide Transportation Management Software *(continued)*

The new ATMS will enable PANYNJ to better manage its critical transportation-related assets. Kapsch will merge 21 independent traffic and facility management data systems into a single enterprise DYNAC-based ATMS that will manage the Authority's vital "Gateways to the Nation" transportation assets including the George Washington, Bayonne, and Goethals Bridges & Outerbridge Crossing, Lincoln & Holland Tunnels, LaGuardia, JFK International & Newark Liberty International Airports and the Port Newark-Elizabeth Marine Terminal.

Deployed in redundant data centers to improve reliability, maintainability and security, the new ATMS will replace independent legacy systems with an agency-wide, next generation architecture. All Authority assets will be able to be managed from any individual facility as well as the PA-AOC, providing agency-wide situational awareness. The ATMS will enable rapid, consistent, and appropriate responses to traffic incidents and tunnel life safety events by generating and executing real-time response plans to help facility and AOC operators expertly manage time sensitive, critical situations. New software at the Ferry Transportation Unit, Port Authority Bus Terminal, GWB Bus Station, Teterboro & Stewart International Airports and PATH will inform all Authority facilities on the status of the regional transportation network.

The ATMS will facilitate enhanced motorist safety and mobility by improving regional travel throughout the PANYNJ's transportation system infrastructure. The ATMS will communicate with 511 database and the traffic and incident data systems used by the Authority to convey real-time traveler information to regional transportation agencies and the traveling public. This streamlined interface will improve agency operational efficiency and information accuracy, facilitate consistent workflows, and enhance environmental monitoring and reporting capabilities

**Kapsch TrafficCom** is a provider of intelligent transportation systems (ITS) in the segments of toll collection, traffic management, safety and security, smart urban mobility and connected cars. The end-to-end solutions of Kapsch TrafficCom cover the entire value creation chain of its customers as a one-stop shop, from components and design to the installation and operation of systems. The core business comprises the development, installation and operation of electronic toll collection and traffic management systems.

References in more than 50 countries on all continents have made Kapsch TrafficCom a globally recognized ITS provider. As part of the Kapsch Group, an Austrian family-owned technology group founded in 1892, Kapsch TrafficCom is headquartered in Vienna, Austria, and has subsidiaries and branches in 30 countries. It has been listed since 2007 on the Vienna Stock Exchange (KTCG) and generated revenues of EUR 526 million in the fiscal year 2015/16 with over 4,600 employees. For more information: [www.kapsch.net](http://www.kapsch.net) and [www.kapschtraffic.com](http://www.kapschtraffic.com). Follow us on Twitter: [twitter.com/kapschnet](https://twitter.com/kapschnet). View source version on businesswire.com: <http://www.businesswire.com/news/home/20170227005857/en/>



***Do you have educational or informational articles you would like published in the NJAC COUNTY BIZ?***

**Contact Loren Wizman, Director of Business Development, at (609) 394-3467 or [loren@njac.org](mailto:loren@njac.org).**

## Grey Gardens in Bloom

by Alannah Dragonetti, Head of Marketing for GovPilot

It's the subject of a classic 1976 documentary, the setting of an HBO movie starring Jessica Lange and Drew Barrymore and the inspiration for a Tony award winning Broadway musical. Grey Gardens has been viewed from a variety of perspectives, but never as an allegory for the reversibility of property blight, until now. A property synonymous with squalor, Grey Gardens has been rehabilitated and placed on the market for nearly \$20 million.

"Grey Gardens in Bloom" traces the East Hampton, New York manor's devastating decline and long road to restoration. Like any great comeback story, the fall and rise of Grey Gardens cautions against complacency and serves as a testament to the impermanence of problems.



### Background

Grey Gardens was built in 1897, but this story doesn't begin until 1924. That year, New York City attorney, Phelan Beale and his wife, Edith Ewing Bouvier Beale, purchased the 28-bedroom mansion and moved-in with their three children: daughter, Edith (whom everyone called, "Little Edie" to differentiate from "Big Edie", her mother) and two sons, Phelan Beale Jr. and Bouvier Beale.

From the outside, the four acres of lush, oceanfront land must've looked like an idyllic place to raise a family, but inside Grey Gardens' walls, Big Edie's eccentricities threatened to turn the East Hampton palace into a prison. A once steady stream of invitations to high society events dried as Big Edie displayed increasingly erratic behavior at cocktail parties. Citing respiratory illness, she pulled Little Edie out of school at age 11 and kept the girl at her side for frequent trips to cultural attractions over the next two years.



### Decline

Dubbed Grey Gardens for the dark Spanish concrete garden walls, greige sand dunes and silver sea mist that surround it, the name took on a different, albeit appropriate, meaning as the manse slipped into a state of steady decline following the dissolution of Phelan and Big Edie's marriage in 1934.

Big Edie acquired Grey Gardens and some compensation for child support, but little else in the divorce. She sold family heirlooms and relied on her father for financial assistance.

Big Edie was already struggling to maintain the expansive estate when her father disowned her for showing-up late to son, Bouvier's, 1942 wedding dressed as an opera singer. Lacking the financial and physical means to care for the property, Big Edie watched her well-manicured garden revert to its untamed state and the home's interior follow suit.

In 1953, a grown Little Edie abandoned her life in New York City to move back to Grey Gardens and look after her mother. Ironically, living conditions at Grey Gardens worsened following Little Edie's arrival.

*continued on page 12*

## Grey Gardens in Bloom *(continued)*

She shared her mother's reclusive tendencies and spent her days feeding the raccoons that entered the home through its collapsed roof. 1953 was very different for Big Edie's niece/Little Edie's cousin, Jacqueline Bouvier. That September, Bouvier wed Massachusetts Democratic Senator, John F. Kennedy. Seven years later, the couple would become the youngest president and first lady in American history. As the outside world was forever changed by President Kennedy's campaign, policies and assassination, the world inside Grey Gardens lay suspended in decay.



The two Edies lived in worsening degrees of squalor for the next two decades, feeding stray cats and ingesting cat food themselves. The enormous space grew crowded with filth. Conditions became so bad that the two Edies sequestered themselves in the only three rooms they deemed habitable.

What began as a local curiosity became the bane of East Hampton. After a cacophony of complaints from neighbors about "the eyesore", the Village ordered a series of inspections, which the Edies called, "raids" in the early 1970s.

Things inside the home were worse than East Hampton inspectors had anticipated. Grey Gardens was the manse of a wing of an iconic American family, but its run-down state rendered that imperceptible. Grey Gardens had more in common with the dilapidated apartment buildings that lined the streets of New York's South Bronx at that time ("How the South Bronx Went from Devastation to Destination" is featured in *NJAC County Biz's* November 2016 issue).

A Village official calculated, "It would take about \$10,000 to demolish the house. With the land cleared you could easily get \$80,000, a sum that would be of considerable interest to members of the family..." Other estimates run as high as \$300,000.

The Edies' relationship to former first lady, Jacqueline Kennedy (now Onassis) turned what would be local gossip into national news. In stark contrast with their cloistered lifestyle, the Beale women embraced the media attention. They happily answered questions from the press and famously welcomed a documentary crew into their notoriously unclean abode.

With the help of their high profile, restoration-savvy relative, the two Edies were able to comply with East Hampton codes, but an unwillingness or inability to change their ways meant that Grey Gardens would remain ramshackle.

### **Comeback**

Big Edie's 1977 death signaled the end of an era at Grey Gardens. Little Edie sold the mansion to *Washington Post* Executive Editor, Ben Bradlee and his wife, journalist, Sally Quinn, for \$220k.

Bradlee explained their unconventional purchase, admitting, "'Inside, the cat smell was overpowering. The floor was part dirt. The ceiling was caving in. Raccoons peered at me through the rafters. Some twenty cats scurried as we entered each room. Still I thought it was the prettiest house I had ever seen.'"

In true journalistic fashion, Bradlee and Quinn were ready to dig-up some dirt to uncover the true Grey Gardens. The couple gutted and replaced most of the materials in the home and revived the surrounding yard.

*continued on page 13*

## Grey Gardens in Bloom *(continued)*



After over a year of renovations, their friend, the writer, Nora Ephron, remarked that, “all the grace of the original house is exactly as it was.” Bradlee and Quinn summered at Grey Gardens until Bradlee’s 2014 death.

In mid-February 2017, headlines declared the storied East Hampton estate was on the market for a whopping \$19.995 million. Pictures show a cerulean swimming pool and a patio overlooking a verdant garden kept intentionally unruly as an homage to its famed former tenants.

The story of Grey Gardens is an extreme example of a simple truth that GovPilot has observed time and again: with good intentions and adequate resources, property blight is reversible. GovPilot’s Vacant Property Management process empowers municipal and county governments across the United States to bounce back from property blight, without the Kennedy budget.

### About GovPilot

GovPilot is a web-based Management Platform developed exclusively for local government. GovPilot optimizes workflow and revenue streams by replacing antiquated paper processes with digital automation. GovPilot unifies fragmented data and facilitates communication between employees and departments to promote informed decision-making. The platform offers 100+ templated processes, which can be used “off the shelf” or modified to fit a department’s specifications. GovPilot grants unlimited users the ability to manage and share data 24/7, from the office, the field, or the comfort of home.

For more information about this topic, please contact Alannah Dragonetti by telephone at (201) 222-1155 or via email at [alannah@govpilot.com](mailto:alannah@govpilot.com)



## WELCOME TO OUR NEW MEMBER

**Lexipol, LLC** is America’s leading provider of state-specific policies and verifiable training for public safety organizations.



Lexipol provides more than 150 policies based on federal and state statutes, case law, regulations and best practices. The Lexipol policy manual is written by legal and public safety professionals who constantly monitor major court decisions, legislation and emerging trends.

Lexipol provide regular updates in response to legislative mandates, case law and the evolution of best practices. If you would like to learn more about Lexipol, LLC please contact Mark Bedard, Business Development Executive at [MBedard@lexipol.com](mailto:MBedard@lexipol.com).

# Introduction to Smart Communities Technology

April 7, 2017 11:00a.m. – 2:00 p.m.

Felician University, Rutherford Campus, 1 Felician Way, Rutherford, NJ 07070  
Education Commons Building

**CEUs: CMFO/CCFO-3.0 IT; CTC-3.0IT; CPWM-3.0 IT; RMC-3.0 IT; QPA-3.0IT**

Municipal Registration Form [WORD](#) / [PDF](#)

Non-Municipal Registration Form [WORD](#) / [PDF](#)

Made possible through the generous support of Verizon New Jersey

**Registration Fee: \$25.00 per person** (fee includes networking lunch and displays 11:00a.m. – 12:00p.m. and the program beginning at 12:00p.m.)

## Program Outline:

The concept of “Smart Communities” incorporates improving the quality of life by using technology to improve the efficiency of city services and meet residents’ needs. This program will explain Smart Communities technology such as: saving energy, adding security, creating efficiencies, and understanding the costs and implementation process.

The Smart Communities concept involves the Internet of connected things and new ways of using data to create effective more efficient options. Some of these advances are already happening here in New Jersey. This program will give you a better understanding of the possibilities and show you real examples of what Smart Communities can do. Presenters include local government practitioners, Fortune 100 Smart Communities advisors, and New Jersey experts.

## Presiding Mayor:

\*NJLM Educational Foundation President, Mayor Timothy McDonough, Hope Township

## Presenters and Topics:

Subject Matter Overview:

\*Michael Darmetta, Senior Manager at Verizon Enterprise Solutions; Lead manager for the Smart Community Team.

Utilities Role in Smart Cities:

\*Benjamin J. White, Distribution Business Team Leader, PSE&G-“Utility Infrastructure and the Roll Out of Smart Cities”

City of Hoboken Smart Cities Case Study:

\*John Morgan, Director, Hoboken Parking Authority-“Portfolio of solutions from fleet, scheduling, and cameras, to meters and GPS”

Questions and Discussion:

\*Panel and the Audience

NJLM  
EDUCATIONAL FOUNDATION, INC.

## IN CASE OF INCLEMENT WEATHER OR CANCELLATION:

We will announce emergency seminar cancellations via recorded announcement on our Weather Hotline: **609-695-3481 ext. 200** and post announcements on our website [www.njslom.org](http://www.njslom.org) or [www.njlmeff.org](http://www.njlmeff.org) after 6:00am on the morning of the meeting. Please note: If an event is cancelled by the NJLMEF registration fees will be refunded in full. Modification of events will not be cause for refunds.

NJLM Educational Foundation, Inc. - 222 West State Street, Trenton, NJ 08833- 609-695-3481 - [www.njlmeff.org](http://www.njlmeff.org)

# Signal Performance Metrics

by Erin Skimson, Director of ITS Product Managing for Miovision

This is part 2 of 4 in our blog series on Traffic Insights

In [part one](#) of this series, we covered the evolution of data-driven traffic operations. Part 2 is focused on Signal Performance Metrics (SPMs).

## Design, Tune and Troubleshoot with SPMs

Signal Performance Metrics are a set of measurements and visualizations that help traffic teams design, tune, and troubleshoot intersections.

Miovision Spectrum provides the entire range of solutions needed to collect, monitor, and understand traffic signals. Spectrum's analytical tools and reports generate actionable information from the raw intersection data. SPMs provide reporting of key metrics like:

- Vehicle volumes
- Wait times
- Problem detection

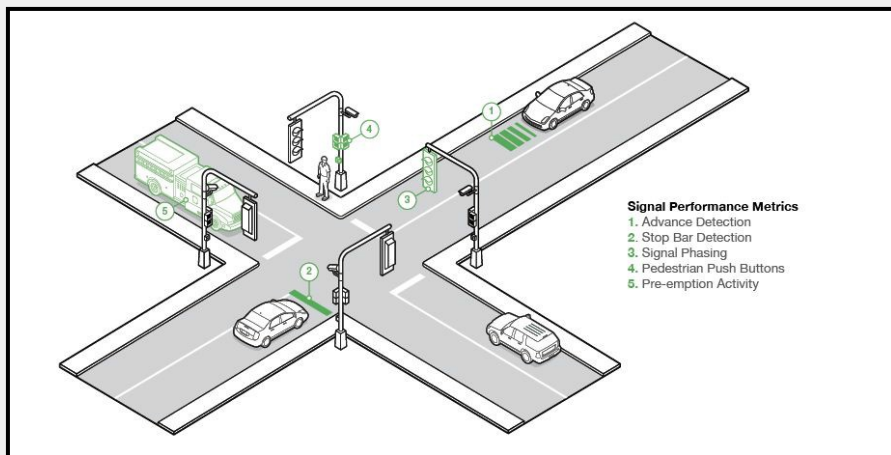
## Do These Questions Ring True?

SPMs help traffic agencies answer the most basic questions like:

- Are my traffic signals working?
- What kind of traffic volumes are we seeing?

But also deeper-level questions like:

- Do we have an appropriate allocation of green time between movements?
- Are we meeting our goals on vehicle wait times at rush hour?



## How Are SPMs Generated?

Spectrum captures event data from the traffic controller, detectors, and other cabinet devices. This includes sign pre-emption, and detector actuations.

Spectrum's cabinet hardware generates this data even from cabinets housing older traffic controllers. These do not produce high resolution reporting. The data is securely stored in Spectrum's cloud where analysis is performed to extract meaningful information

## Infrastructure Requirements for SPMs

### With no detectors, Spectrum SPMs include:

- Red/Green Allocation: The proportion of green time allocated to each approach and movement.
- Pre-emption Summary: Reports of pre-emption events, durations, and triggers, including railroad crossings or emergency vehicle pre-empts.

*continued on page 16*

# Signal Performance Metrics *(continued)*

## With stop-bar detection data, Spectrum SPMs include:

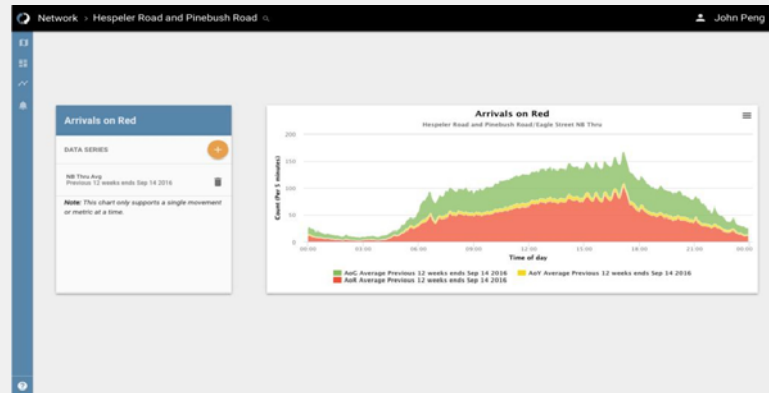
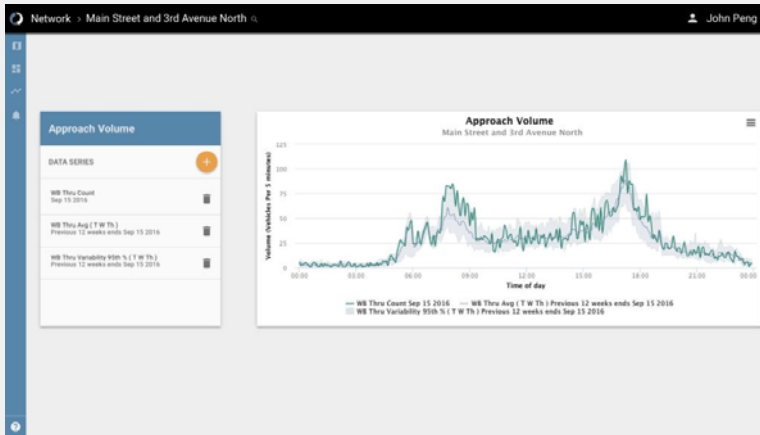
- \*Red and Green Occupancy Ratio: Gauges the demand for the various phases based on the ratio of time that vehicles are present in the associated movements. This allows for tuning of split times between phases.
- \*Purdue Split Failure: Charts the frequency of split failure occurrences, an incident where green signal time fails to meet the vehicle volume demand.
- \*Simple Delay: measures the time between detector activation during red signals and movement service at start of green signals.

## With advanced upstream detection, Spectrum SPMs include:

- \*Arrival Volumes: Counts of total vehicle traffic through an intersection from each approach.
- \*Arrivals- on-Red vs. Arrival-on-Green: Counts of total vehicle volume arriving during red or green, giving a rough sign of progression quality.
- \*Purdue Coordination Diagram: A graphical representation of individual vehicle arrivals relative to cycle time, highlighting arrival characteristics, and platoon progression quality.
- \*Average Delay: The time vehicles are delayed at a congested intersection.

## SPM Dashboards

We've included three screen grabs for dashboards that are generated by Spectrum.



**Approach Volume:** The volumes for the chosen day compared to the previous 12-week weekday average.

**Arrivals on Red/Green:** Showing the average volume of traffic arriving at the intersection during the red or green at different times of the day.



**Occupancy Ratio** chart showing the stop bar occupancy ratio during red, green, and the first 5 seconds of subsequent red (ROR5) for each cycle of a selected movement.

For additional information, please contact Andrew Fonseca, Account Executive, at [afonseca@miovision.com](mailto:afonseca@miovision.com).





## Federal Grants

### Activating Community Opportunities Using Museums/Libraries as Assets-A National Leadership Grants Special Initiative



**Deadline:** April 3, 2017

**Available:** \$25,000 to \$150,000

**Number of Awards:** 20

**Funding Opportunity Number:** NLGSPECIALINITIATIVE-COMMUNITYCATALYST-F

<https://www.ims.gov/grants/available/activating-community-opportunities-using-museums-libraries-assets-national>

### Justice and Mental Health Collaboration Program

**Deadline:** April 4, 2017

**Available:** \$200,000 Award ceiling

**Number of Awards:** 45

**Funding Opportunity Number:** BJA-2017-11380

<https://www.bja.gov/funding/JMHCP17.pdf>



### Minority Youth Violence Prevention II: Integrating Social Determinants of Health and Community Policing Approaches

**Deadline:** April 4, 2017

**Available:** \$325,000-\$425,000 per year for a period of 4 years

**Number of Awards:** 11

**Funding Opportunity Number:** MP-YEP-17-001

<https://www.grantsolutions.gov/gs/preaward/previewPublicAnnouncement.do?id=58609>



### The Coastal Program

**Deadline:** September 30, 2017

**Available:** \$500,000 award ceiling

**Number of Awards:** 500

**Funding Opportunity Number:** F17AS00014

<http://www.grants.gov/web/grants/search-grants.html>



### Economic Development Assistance Programs Public Works and Economic Adjustment Assistance Programs

**Deadline:** Open

**Available:** \$1000,000 to \$3,000,000

**Number of Awards:**

**Funding Opportunity Number:** EDAP2017

<http://www.grants.gov>



## Nationwide Economics

### Weekly Economic Review & Outlook for March 6, 2017

by Ben Ayers, Senior Economist of Nationwide Mutual Insurance Company and  
Ankit Gupta, CFA, Junior Economist of Nationwide Mutual Insurance Company

---

#### **Weekly Economic Review**

Only a week ago, the odds of a tightening move during the March Federal Open Market Committee (FOMC) meeting was clearly less than 50 percent. While economic data showed improvement and inflation was running at the fastest pace in several years, there was a noticeable absence of strong signals from Fed policymakers. Market expectations now place a 90 percent likelihood of a tightening move later this month, however, after several Fed officials, including Chair Yellen, Vice Chair Fischer, and New York Fed President Dudley laid the groundwork for a March hike in speeches last week.

The consensus toward a rate hike during next week's meeting appears on the surface to have occurred quickly, but it has likely been building since the January FOMC meeting. Job growth has reaccelerated in 2017 while year-over-year inflation data has picked up sharply. Consumers and businesses are optimistic about future economic growth with survey data pointing to stronger activity this year. Aside from a very poor payroll growth figure for February (to be released this Friday), the committee should view enough strength in the economic/inflation data to pull the trigger in March-earlier than expected at the start of the year.

The ISM manufacturing survey increased for a sixth consecutive month, rising to 57.7 in February. There has been only one month with a stronger reading for the index since the first half of 2011. The turnaround for the manufacturing sector from contraction readings as recently as last August has been swift and strong. Sub-index components suggest robust gains for new orders and total production as well as rising manufacturing employment in months' ahead.

The nonmanufacturing index was also up in February, climbing to a 16-month high of 57.6 and indicating solid expansion for the service sector. Growth in services appeared to wane in early 2016, but it has trended higher since then with improved business activity and employment readings. Taken together, the ISM surveys paint a bright picture for private sector growth in the second quarter and beyond.

Light vehicle sales were little changed at an elevated annualized sales pace of 17.6 million units in February. Consumer demand remains strong with an added boost from still-low financing rates and dealer incentives. Rising incomes and a historically old auto stock continue to be the primary drivers of an upward trend in total auto purchases.

Light trucks (including SUVs, cross-overs, and pickup trucks, but not heavy-duty trucks) rose as a share of light vehicle sales to an all-time peak of 62.8 percent in February. Not surprisingly, there has been a pronounced uptick in light truck sales since late-2014 after the sharp decline in gasoline prices.

#### **The Week Ahead**

The highlight of the week will be the February employment report including job gains, the unemployment rate, and average hourly earnings. In addition, data on the January trade deficit, fourth quarter productivity and costs, and January factory orders and shipments will be released this week.

We expect that employers continued adding to payroll employment, up by 188,000 in February. This remains well above estimates of trend growth (roughly 75,000-125,000 per month), suggesting that the labor market continues to tighten. Risks are tilted to the upside with warmer-than-usual weather across the country.

*continued on page 19*

## Nationwide Economics *(continued)*

The tightening labor market should push the unemployment rate lower to 4.7 percent, just above the lowest levels seen since the Great Recession began at the end of 2007. Increasingly tight labor markets should also push wages higher. Average hourly earnings are projected to increase by 0.4 percent in February, lifting the 12-month growth rate up to 2.75 percent-nearing the current expansion's peak.

The trade deficit is at the center of two trends. First, faster growth in the U.S. than in most of its main trading partners suggests that imports will rise faster than exports. Second, a rising dollar makes foreign goods relatively less expensive than domestically produced goods/services-increasing the demand for foreign goods/services still more. Based on the already-announced advance estimate of trade in goods, which showed the deficit increasing by approximately \$4 billion, we expect the overall trade deficit to rise to \$48 billion (assuming a small increase in the surplus for services).

If you are interested in providing a social security or healthcare workshop for your employees, please contact your local Nationwide Retirement Specialist or Emanuel Mahand (Program Director) at Cell:609-923-8859 or [mahande@nationwide.com](mailto:mahande@nationwide.com).



## Therapeutic Value of Pets: Finding Love in Our Furry Friends

by Janie Feldman, PsyD for the New Jersey Psychological Association



Ever notice that pet lovers tend to really love their pets? It's as though they love them as much – or more – as some family members. This is not uncommon, for many dog and cat owners do have a very strong emotional bond with their feline and canine family members. There are really good reasons for this special kind of love affair.

**Physical benefits.** For one thing, there are physical benefits to having a furry friend in your life. Having a dog promotes walking, jogging, hiking, and just being outdoors with your pup – all of which have well known benefits. When you pet your pet, you can almost feel yourself relaxing as the stress melts away with every touch. In addition, having pets lowers blood pressure, and can lower your risk for heart attack and stroke. Furthermore, having cats and dogs in your home will increase your immunity as well as lower your risk for developing allergies.

**Social benefits.** There are also social benefits to having dogs and cats. Having these pets, especially walking dogs, serves as instant ice breakers. People often approach others when they have their pets with them. Greeting someone else's pet serves as a great conversation starter. Not only does having a pet bring companionship between you and your pet, there can be an increase in togetherness in the family over bonding with the animal in your home. Your cats and dogs can be the topic of conversation, shared activities, and chores that can build independence and responsibility in your children. Having Fluffy or Fido gives parents the opportunity to model caring behaviors, enabling children to learn how to care for others.

**Psychological benefits.** Finally, there is a special psychological benefit to having a dog or cat in your life. Having your pet can bring a special sense of purpose as you care for your animal. This is especially beneficial to the elderly, empty nesters, and folks who live alone.

*continued on page 20*

## Therapeutic Value of Pets *(continued)*

Increasingly more common is the presence of puppies on college campuses to alleviate students' stress, especially right before final exams. Therapy pets accompany volunteers into hospital wards, hospice care, and other places where their unconditional love and affection have soothing, therapeutic effects on the folks they visit. Service dogs receive specialized training to help the blind move independently, identify when diabetic people experience hypoglycemia or hyperglycemia (when they have a drop or increase in blood sugar), and help people with anxiety, depression or behavioral difficulties such as autism function in a more satisfying, socially appropriate manner.

**Difference between Companion Dogs, Therapy Dogs, and Service Dogs.** It can be confusing to know the difference between Companion Dogs, Therapy Dogs, and Service dogs. Essentially, the differences lie in the amount of specialized training a dog receives.

Companion Dogs are well behaved, well trained dogs who provide comfort to their people. They don't have the same specialized training as Therapy Dogs or Service dogs, but will make great pets for people who need their comforting companionship but do not require specialized skills.

Therapy Dogs receive special training to provide affection and comfort to their humans. Their calm dispositions make them great pets for people who want to share them with others who may need their affection such as hospital patients or college students. While they do receive specialized training and certification, they have no federal mandates stipulating that they can accompany their humans into restaurants and other public places.

Service Dogs receive highly specialized training and certification in specific areas of support. The Americans with Disabilities Act mandates that these animals may accompany their humans into any public place, including air planes and restaurants. Their training is specific to the type of people they can service, whether it is people with diabetes, folks with psychological disorders such as PTSD or anxiety, and people who have medical conditions such as being blind or having diabetes or epilepsy.

**Research Dogs.** In addition to personal benefits of having dogs as pets, dogs in research are helping scientists detect cancer. By sniffing out the plasma of ovarian cancer patients compared to women without disease, dogs are training to help researchers find new ways to detect cancer much earlier than existing medical techniques. This can save many lives because ovarian cancer is difficult to detect until later stages when it has spread. Researchers at the University of Pennsylvania's Penn Vet Working Dog Center are also trying to determine which method is most effect in detection: using plasma, secretions, urine, or breath to detect cancer and other diseases.

**In conclusion,** having a dog or cat in your life provides you with a great amount of unconditional love, affection, and important physical, social and psychological benefits. When considering bringing a new animal into your home, remember if possible to adopt your new pet, not shop. There is an overabundance of unwanted puppies, kittens, dogs, and cats of all kinds filling shelters waiting for adoption. There are more unwanted pets than there is space for them. Adopting an unwanted pet (or two!) has an added benefit of saving a life, and your rescue pet will remind you each and every day how special that is for you both. Bringing a pet into your world will mean the world to you both. And if you already have a pet, you know what that means.

**Resources.** Here are some resources for further reading, or to help you find a pet to meet your personal needs:

Autism Speaks "is dedicated to promoting solutions, across the spectrum and throughout the lifespan, for the needs of individuals with autism and their families through advocacy and support; increasing understanding and acceptance of autism spectrum disorder; and advancing research into causes and better interventions for autism

*continued on page 21*

## Therapeutic Value of Pets *(continued)*

spectrum disorder and related conditions.”

<https://www.autismspeaks.org/blog/2016/07/15/service-dog-or-therapy-dog-which-best-child-autism>

**Project Chance** “provides service dogs trained to assist individual children to help them achieve maximum potential and independence in executing therapeutic, social, and physical tasks throughout their lives. Project Chance also provides therapy dogs trained for use in classroom settings. Project Chance provides the opportunity for donors, foundations, corporations, and advocates to invest in clinically prescribed and professionally trained dogs with the specific skill sets needed to aid children diagnosed with autism and other developmental disabilities.” <http://www.projectchance.com/dogs.html>

**4 Paws for Ability, Inc.** “mission is to:

- Enrich the lives of children with disabilities by the training and placement of quality, task trained service dogs to provide increased independence for the children and assistance to their families.
- Enrich the lives of veterans from recent conflicts who have lost the use of their limbs or their hearing while in active combat.
- Educate the public to accept the use of service dogs in public places.
- Assist with animal rescue when possible

*The New Jersey Psychological Association (NJPA) is recognized as one of the strongest state psychological associations in the country. NJPA is an indispensable network of resources for the public and media, a staunch advocate for psychologists in the state, and an influential presence helping shape mental health policies in New Jersey.*

Visit us at [www.PsychologyNJ.org](http://www.PsychologyNJ.org) to locate a psychologist or to find the most current news, articles, and events that may be of interest to you. Follow us on Twitter [@njpsychassn](https://twitter.com/njpsychassn), connect with us on [Linked In](#), and subscribe to our [quarterly newsletter!](#)

For more information, contact Executive Director, Keira Boertzel-Smith, JD or Communications Manager, Christine Gurriere at 973-243-9800.



**NEW JERSEY**  
PSYCHOLOGICAL ASSOCIATION

### SAVE THE DATES 2017 NJAC MEETINGS AND EVENTS

<b>March 24</b>	Board of Directors Meeting - Trenton
<b>May 11</b>	Board of Directors Meeting at Caesar's in Atlantic City
<b>May 12</b>	Board of Directors Meeting at Caesar's in Atlantic City
<b>June 23</b>	Board of Directors Meeting - Trenton
<b>July 20</b>	7 <sup>th</sup> Annual Night of Baseball & Fireworks <i>Trenton Thunder vs. New Hampshire Fisher Cats</i>
<b>September 22</b>	Board of Directors Meeting - Trenton
<b>December 8</b>	Board of Directors Meeting & Year End Summit <i>Trenton Country Club - West Trenton</i>

# 2017 NACo ANNUAL CONFERENCE

July 21-24



## Columbus - Franklin County, Ohio

*Register Today*

The National Association of Counties (NACo) Annual Conference is the largest gathering of county officials in the country and the foremost opportunity to exchange information with your peers and learn from nationally renowned experts on topics directly related to serving your residents. The Annual Conference is also where we set our federal policy agenda for the year ahead.

NACo's 2017 Annual Conference in Franklin County (Columbus), Ohio will offer over 50 committee meetings, plenary sessions and educational workshops, including four mobile workshops designed to give you first-hand insights into:

- Nationwide Children's Hospital – one of America's leading health care and research facilities supporting more than a million patients and families annually
- Ohio State University Campus Agriculture – Franklin County, the City of Columbus and community partners leverage food system development to revitalize neighborhoods, improve health, address food insecurity and foster economic growth
- Rickenbacker Inland Port – a global multi-modal logistics hub for product distribution to U.S. and Canadian consumers
- Scioto Mile and National Veterans Museum

The Annual Conference also features an exhibit hall with over 150 companies displaying the latest products and services geared towards county needs. Make new contacts with vendors and NACo partners offering potentially cost-savings solutions specific to county governments. Columbus – Ohio's capital and the 15<sup>th</sup> largest city in the United States – is located within 550 miles of more than half of the U.S. population.

Conference registration fees are significantly discounted for those counties that are already members.

***If your county is a non-member, then NACo is offering FREE individual registrations to the 2017 NACo Annual Conference upon your county joining NACo. Contact Andrew Goldschmidt, Director of Membership Marketing, at 1 (888) 407-6226 x221 or [agoldschmidt@naco.org](mailto:agoldschmidt@naco.org) for more information on this unprecedented offer. Learn why your county should be a member by visiting [www.naco.org](http://www.naco.org).***

## NACo Upcoming Webinars

### State and Local Legal Center Supreme Court Midterm Webinar

Mar. 30, 2017, 2:00 pm – 3:15 pm

[Register](#)

The Supreme Court's 2016-17 docket is set. While the Court is still down a Justice and will decide fewer cases than usual this term, it will decide many cases of interest to states and local governments including a number of police cases, First Amendment cases, and a preemption case. Join Matt Wessler, Gupta Wessler, who argued the preemption case, Tom Bondy, Orrick, who co-wrote the merits brief for Los Angeles county in the most important police case of the term, and Lawrence Hurley, Supreme Court correspondent for Reuters, in a discussion of the cases and the future of the Court.



Contact Daria Daniel (202) 942-4212 [ddaniel@naco.org](mailto:ddaniel@naco.org)

### Naturally Resilient Communities: Rethinking Flood Protection through Nature-based Solutions

April 5, 2017, 1:00 pm – 2:00 pm

[Register](#)

NACo, along with 6 other key partners, have collaborated to develop the Naturally Resilient Communities online guide tool to promote the role that nature-based solutions can play in helping reduce flood risk for communities, while also providing other benefits such as improved water quality enhanced recreational opportunities and wildlife habitats, and stronger, more resilient local economies.

This educational webinar will walk attendees through this online tool and the specific solutions and community case studies it highlights.

Attendees are encouraged to visit [NRCsolutions.org](http://NRCsolutions.org) in advance of and during the webinar.

Contact Linda Langston (202) 942-4274 [jmorgan@naco.org](mailto:jmorgan@naco.org)

### Stepping Up: Conducting Timely Mental Health Screening and Assessment in Jails

Apr. 6, 2017, 2:00 am – 3:15 am

[Register](#)

Join the Stepping Up partners for the second webinar in the Six Questions series, which will feature key strategies for conducting timely screening and assessments for mental health and substance use in jails. To reduce the number of people with mental illnesses in jail, counties need to have a clear and accurate understanding of the prevalence of these disorders within their jail populations. This requires universal screening of every person booked into jail for mental illnesses, as well as other behavioral health needs, such as substance use. On this webinar, a national expert will provide an overview of key strategies from the Six Questions report for effectively and consistently identifying people with mental illnesses and/or substance use disorders in county jails and how to appropriately share this information. Then, county officials will share how they have implemented screening and assessment processes in their jails and discuss the benefits of these tools.

Contact Nastassia Walsh (202) 942-4289  
[nwalsh@naco.org](mailto:nwalsh@naco.org)



## Somerset County Freeholders Partner with Integrity Health to Form the Somerset County Partnership Health Center

by Linda VanZandt, Public Information Director for Somerset County

*State-of-the-art facility will provide a turnkey solution to county employees health care needs*

On February 28<sup>th</sup>, the Somerset County Board of Chosen Freeholders unanimously voted to award a contract to Princeton-based Integrity Health, LLC to establish, manage and operate an on-site health, wellness and care coordination center for county employees, employee dependents and retirees who are covered under the county's health plan. The center will become known as the Somerset County Partnership Health Center (SCPHC).



**Mark Caliguire**  
Somerset County Freeholder

“Somerset County is always looking for first-class innovation in the way we spend taxpayer money and deliver services, so I am proud and excited to announce this new partnership with Integrity Health,” said Somerset County Freeholder Mark Caliguire. “We understand that one of the biggest factors associated with our county budget is the rising cost of health care and we have worked hard over the years to control these costs.

“By partnering with Integrity Health, we are going to provide better health outcomes for our employees at a lower cost to our taxpayers,” he said. “After an exhaustive and diligent process that began over a year ago, we evaluated companies from across the country in a competitive review and chose Integrity.”

Integrity Health offers health plan sponsors and their eligible employees a customized and complete administrative program for healthcare. Integrity Health has been very successful at saving employers and employees money by providing easier access to effective care within a patient-centered medical environment.

This is done by offering eligible employees multiple primary care services at one location close to where they work and live. This eliminates expensive and unnecessary emergency room charges, provides convenient access to care so medical needs are not compounded, and allows primary care to be coordinated with hospitals and specialists to minimize repeat doctor visits.

Integrity Health Chairman and CEO Doug Forrester said, “We are very pleased to work with Somerset County leadership in their continuing efforts to control health care costs for county employees and taxpayers alike. Our motto is ‘Lower Costs Through Better Health’ and we look forward to bringing the success of this philosophy to Somerset County as we have for other health plans. Even though utilization of the health center by eligible county employees will be strictly voluntary, given our track record, I am confident that the overwhelming majority of employees will come to trust the first-class health care and coordination they will receive.”

“Somerset County continues to invest in the health and wellness of our employees,” said County Administrator Michael J. Amorosa. “Our employees will not pay a copay when visiting the SCPHC or for prescriptions dispensed there. The SCPHC will be open seven days a week and staffed by board-certified professionals. This will give employees and their dependents a convenient, local option for many of their health care needs.”

All services offered at the SCPHC will be provided on a no-copay basis, which will result in hundreds of dollars saved per eligible family per year. The SCPHC will provide primary care physicians, lab services, and a full pharmacy. The center is scheduled to open later this year.





## Igniting a Dream: ProStart is the Main Ingredient

by Marilou Halvorsen, President for the New Jersey Restaurant and Hospitality Association



What do chefs in upscale restaurants, a student in the Disney College program and a transient, first-generation high school graduate who went on to create his own success have in common? They all built their foundation as students in the NJ ProStart program.

Nearly a decade after it began, ProStart is precisely what it sounds like: a career and technical education program that focuses on engraining culinary arts and restaurant management fundamentals in high school students. The program, which grew to reach nearly 140,000 students nationwide in 2016, graduates students proficient in knife cuts and basic costing, as well as something even

more valuable: professional development. Critical thinking, teamwork, dependability, professionalism and time management are skills that will serve ProStart participants for the rest of their lives, in any career they choose.

Today, ProStart is the only homegrown educational program acting as a feeder program for the diminishing workforce of our state's \$16 billion restaurant industry. An industry which is projected to grow from nine percent to over sixteen percent of the state's employment in the next decade.

With the growing challenge of filling seasonal and year-round positions, New Jersey's ProStart Program's rise is a timely one. Every fall, our state's youth flock to college, many out-of-state, most incurring tremendous debt and frequently only choosing to return to the restaurant industry until they get what they define as a "real job." Oddly, what society once considered a stepping stone to a well-paying career is now merely a rest stop. The trend isn't promising for the industry or for patrons, but the ProStart program offers hope for the future.

For the first time in the 75-year history of the New Jersey Restaurant & Hospitality Association (NJRHA), the outcry from members became so loud that it had to take action. The NJRHA teamed up with Farleigh Dickenson University and New Jersey's Department of Labor & Workforce Development to issue email blasts and create a job board to increase the exposure of industry opportunities, ranging from sous chefs to managers for qualified applicants.

Support of ProStart is critical given it clearly combats many of the problems our state faces: shortage of skilled workers, lack of career opportunities for our youth, as well as students' soaring college debt.

Participating students are immersed in a leading-edge curriculum designed to develop highly trained workers, fully prepared to enter the workforce or to pursue additional training upon graduation. Over 2,000 New Jersey high school students are currently enrolled in the program, many from economically disadvantaged areas in our state.

In fact, research shows that high school students involved in career and technical education programs are more engaged, perform better, and graduate at a rate fifteen percent higher than the average student. With a clear-cut value to students, these programs also have value for businesses: ProStart students graduate ServSafe qualified—every restaurant in our state is mandated to have at least one employee with this certification.

In a few short weeks, some 80 high school students from 12 New Jersey counties will arrive in Jersey City to participate in the 11<sup>th</sup> Annual NJ ProStart Competition. While thousands of students participate in this program statewide, these students dedicate hours of their time, sometimes seven days a week, to prepare for this contest,

*continued on page 26*

## Igniting a Dream: ProStart is the Main Ingredient *(continued)*

all for a chance to represent the Garden State at the National ProStart Competition.

During the competition, students race the clock to develop complex flavors and ornately plated dishes using only two butane burners. Separately, management students compete in a Shark Tank-style competition, pitching a unique restaurant concept, business plan, budget and timeline to a panel of professional judges.

It's a regal battle and one that holds great promise for a rising generation of aspiring chefs and restaurant entrepreneurs.

Bringing ProStart to every county or someday every high school in New Jersey, is a beneficial move for our economy, the restaurant and foodservice industry, and more importantly in the lives of participants. Help us ignite a generation of dreams.

To learn more about the New Jersey Restaurant & Hospitality Association (NJRHA) please contact Marilou Halvorsen, President via e-mail at [mhalvorsen@njrha.org](mailto:mhalvorsen@njrha.org) or visit their website by clicking [here](#).



## **DON'T GET LEFT OUT IN THE COLD!**

### **Have you registered for the 2017 NJAC Annual Conference?**

*There's less than one and a half months left to register individually and as an exhibitor. Only one month remains to get your company noticed through sponsorship and advertisement in our conference directory.*

***Did you know at last year's NJAC Annual Conference there were nearly 600 county & business registrants and 80 vendors?***

*So don't get left out and [sign up](#) now!*

*Contact Loren Wizman, [loren@njac.org](mailto:loren@njac.org), or  
Kim Nolan, [kim@njac.org](mailto:kim@njac.org),  
for more details!*

## FROM THE EXECUTIVE DIRECTOR

NJAC conference registration, hosting opportunities, and the action packed schedule of events are now available online on our website at [www.njac.org](http://www.njac.org). Don't miss the opportunity to be a part of our 67<sup>th</sup> annual celebration of county government scheduled to take place from May 10<sup>th</sup> through May 12<sup>th</sup> at Caesar's in Atlantic City. It includes:

- *Opportunity to meet the 2017 Gubernatorial Candidates*
- *A fantastic County College Acapella Sing-Off*
- *An insightful reporters' roundtable and county awards luncheon*
- *Accredited workshops approved for continuing education credits*
- *All major events and ceremonies hosted in the main exhibit hall*
- *Unique networking opportunities to share resources and ideas*
- *An outstanding County Vocational-Technical School Cook-Off Challenge*



**John G. Donnadio, Esq.**

We're expecting well over 500 guests and 80 vendors for this highly anticipated event that begins on Wednesday evening of May 10<sup>th</sup> with a Meet and Greet Reception; kicks off Thursday morning with a Board of Directors' meeting in the main exhibit hall; and, ends early Friday afternoon on May 12<sup>th</sup> with the Cook-Off Challenge that gets better each year. In between, you'll have the opportunity to network with county and business leaders from across the State; enjoy the incredible harmonies of gifted and talented Acapella singers; meet the 2017 gubernatorial candidates; participate in a spirited panel discussion with journalists who report on New Jersey news and politics; and, earn valuable professional development credits at one of our informative and timely educational workshops. For county affiliate groups, please let us know if you would like to host a meeting as was the case last year with our county administrators, finance officers, public information officers, planners, welfare directors, improvement authorities, and jail wardens. For business associates, vendors, and sponsors, we're also providing the additional value added:

- Free WiFi in the main exhibit hall, seminar and guest rooms
- A late checkout on May 12<sup>th</sup> for 125 attendees that have a Caesar's hotel room reservation
- Cell phone charging stations
- Opportunities for sponsors to showcase their business at several events
- Discounted parking rates for NJAC conference attendees that have a Caesar's hotel room reservation

We're also offering innovative activities strategically placed throughout the exhibit hall and registration area designed to enhance networking and your overall conference experience. As always, thank you for your time and consideration, and please do not hesitate to contact us with any questions or concerns.

# WHAT'S HAPPENING IN YOUR COUNTY?

SUN	MON	TUES	WED	THURS	FRI	SAT
			<u>MAR</u> 15	16 St. Patrick's Day Celebration 3 p.m. Shannon Rose Irish Pub Clifton Passaic County	17 <i>The Saint Patrick's Day Parade</i> Friday afternoon March 17 - 1:00 pm Prudential Center Newark Essex County	18 Bernstein Chichester Psalms 8 p.m. University Chapel Princeton Mercer County
19 Punk Rock Flea Market 10 a.m. - 5 p.m. Elk's Lodge Flemington Hunterdon County	20 Move A United Kingdom 7 p.m. 3/20 & 3/21 The Newton Theatre Newton Sussex County	21	22  BLACK MARIA FILM FESTIVAL Centenary College Hackettstown Warren County	23 Seafood & Live Music 6 p.m. Mitchell's Fish Market Edgewater Bergen County	24 <b>NJAC Board Mtg.</b> 9:30 a.m. State House Annex Trenton	25 10th Annual Singer-Songwriter of Cape May Congress Hall Conference Center Cape May Cape May County
26 Zhang Conducts Beethoven's 7 <sup>th</sup> 3 p.m. Morris PAC Morristown Morris County	27 Harlem Globetrotters 7 p.m. Pine Belt Arena Toms River Ocean County	28  Movie Ghostbusters 8:30 p.m. Mountainside Public Library Mountainside Union County	29 Groove on Grove 6 p.m. - 9 p.m. Path Station Grove Street Jersey City Hudson County	30 The Manhattans 8:00 p.m. Harrah's Resort Atlantic City Atlantic County	31 August Osage County 3/31-4/23 8 p.m. Villagers Theatre Somerset Somerset County	
						<u>APR</u> 1 Menopause The Musical 8 p.m. Count Basie Theatre Red Bank Monmouth County
2 Health Kids Running Series 5 p.m. Marlton Recreation Park Woodstown Salem County	3 14th Annual Dance Concert 7 p.m. Investors Bank PAC Sewell Gloucester County	4	5 Shaolin Warriors 7:30 p.m. State Theatre New Brunswick Middlesex County	6	7	8 Equestrian Show English Western 8 a.m. - 4 p.m. FREE Fairgrounds Mount Holly Burlington County
9	10	11	12	13 Veteran's Job Fair 8:30 a.m. - 1 p.m. BB&T Pavilion Camden Camden County	14  GOOD FRIDAY	